



Performance Report for: <https://bluetreegroupcorporation.com/>

Report generated: Wed, Jun 16, 2021 3:34 PM -0700
 Test Server Location: Vancouver, Canada
 Using: Chrome (Desktop) 90.0.4430.212, Lighthouse 7.4.0

B	Performance	Structure	L. Contentful Paint	T. Blocking Time	C. Layout Shift
	87%	82%	860ms	0ms	0

Top Issues

IMPACT	AUDIT	
Med	Avoid enormous network payloads	Total size was 3.86MB
Med	Serve static assets with an efficient cache policy	Potential savings of 434KB
Med-Low	Use a Content Delivery Network (CDN)	29 resources found
Med-Low	Eliminate render-blocking resources	Potential savings of 173ms
Low	Use passive listeners to improve scrolling performance	1 event listener not passive

Page Details



Total Page Size - 3.85MB



Total Page Requests - 35



■ HTML
 ■ JS
 ■ CSS
 ■ IMG
 ■ Video
 ■ Font
 ■ Other

How does this affect me?

Today's web user expects a fast and seamless website experience. Delivering that fast experience can result in increased visits, conversions and overall happiness.

As if you didn't need more incentive, **Google has announced that they are using page speed in their ranking algorithm.**

About GTmetrix

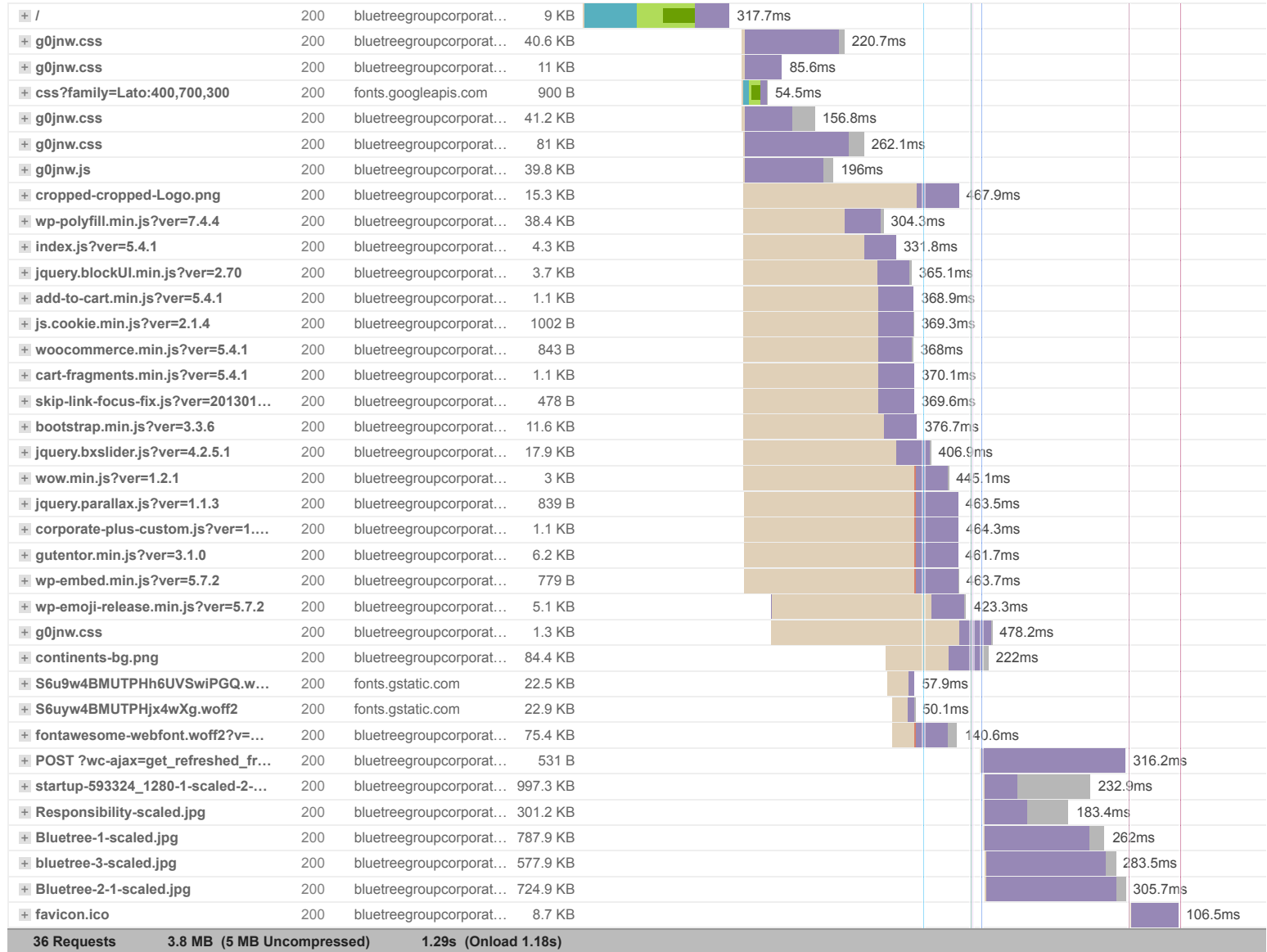
CARBON60
THE MANAGED CLOUD COMPANY

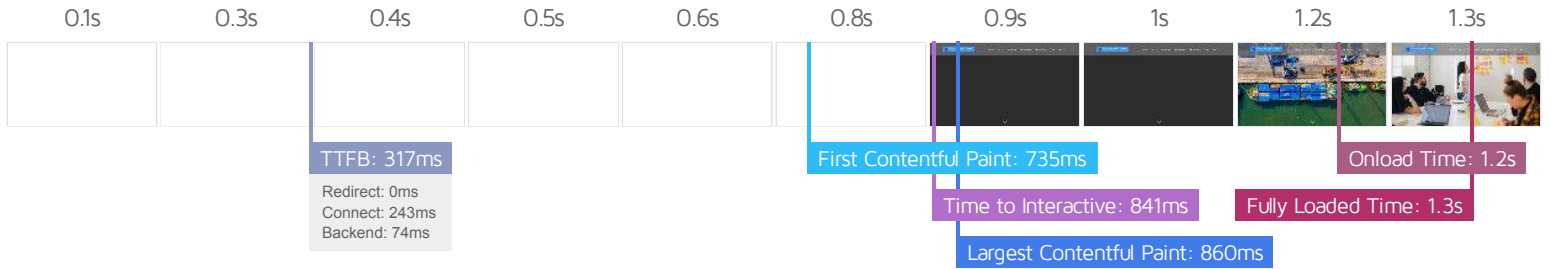
GTmetrix is developed by the good folks at **Carbon60**, a Canadian hosting company with over 25 years experience in web technology.

<https://carbon60.com/>

The waterfall chart displays the loading behaviour of your site in your selected browser. It can be used to discover simple issues such as 404's or more complex issues such as external resources blocking page rendering.

Bluetree Group Corp – Your global trading partner





Performance Metrics

<h3>First Contentful Paint</h3> <p>How quickly content like text or images are painted onto your page. A good user experience is 0.9s or less.</p>	<p>Good - Nothing to do here</p> <p>734ms</p>	<h3>Time to Interactive</h3> <p>How long it takes for your page to become fully interactive. A good user experience is 2.5s or less.</p>	<p>Good - Nothing to do here</p> <p>841ms</p>
<h3>Speed Index</h3> <p>How quickly the contents of your page are visibly populated. A good user experience is 1.3s or less.</p>	<p>Much longer than recommended</p> <p>3.3s</p>	<h3>Total Blocking Time</h3> <p>How much time is blocked by scripts during your page loading process. A good user experience is 150ms or less.</p>	<p>Good - Nothing to do here</p> <p>0ms</p>
<h3>Largest Contentful Paint</h3> <p>How long it takes for the largest element of content (e.g. a hero image) to be painted on your page. A good user experience is 1.2s or less.</p>	<p>Good - Nothing to do here</p> <p>860ms</p>	<h3>Cumulative Layout Shift</h3> <p>How much your page's layout shifts as it loads. A good user experience is a score of 0.1 or less.</p>	<p>Good - Nothing to do here</p> <p>0</p>

Browser Timings

Redirect	0ms	Connect	243ms	Backend	74ms
TTFB	317ms	First Paint	735ms	DOM Int.	839ms
DOM Loaded	839ms	Onload	1.2s	Fully Loaded	1.3s

IMPACT	AUDIT	
Med	Avoid enormous network payloads	Total size was 3.86MB
Med	Serve static assets with an efficient cache policy	Potential savings of 434KB
Med-Low	Use a Content Delivery Network (CDN)	29 resources found
Med-Low	Eliminate render-blocking resources	Potential savings of 173ms
Low	Use passive listeners to improve scrolling performance	1 event listener not passive
Low	Reduce unused CSS	Potential savings of 171KB
Low	Ensure text remains visible during webfont load	3 fonts found
Low	Serve images in next-gen formats	Potential savings of 790KB
Low	Avoid an excessive DOM size	238 elements
Low	Avoid long main-thread tasks	2 long tasks found
Low	Reduce JavaScript execution time	166ms spent executing JavaScript
Low	Reduce initial server response time	Root document took 73ms
Low	Avoid serving legacy JavaScript to modern browsers	Potential savings of 69B
Low	Avoid large layout shifts	2 elements found
Low	Avoid non-composited animations	5 animated elements found
Low	Minify JavaScript	Potential savings of 8.91KB
Low	Avoid chaining critical requests	22 chains found
N/A	Largest Contentful Paint element	1 element found
N/A	Minimize main-thread work	Main-thread busy for 599ms
N/A	Reduce the impact of third-party code	Total size was 46.9KB
N/A	User Timing marks and measures	